



jordan fishwick

FALLOWFIELD
Delacourt Road



Delacourt Road, Fallowfield, M14 6BX

£425,000



The Property

A bay fronted, fully renovated and extended three bedroom semi detached family home with a large open plan living area set in an excellent location, which is within easy reach of both Withington Village and Manchester City centre. The well presented living space is warmed by gas fired central heating, which is further complemented by double glazing and in outline comprises:- Entrance hall with wc off, lounge with bay window, separate dining room, open plan living/kitchen area with tiled floor, light and spacious with sky lights and patio doors opening to the lawned rear garden. The first floor landing gives way to the three bedrooms and the fully tiled re-fitted bathroom with three piece white suite. Externally, the rear garden is laid to lawn with timber fencing. There is a driveway to the front providing ample off road parking. The renovations include a new roof, driveway, re-plastered, electrics, central heating radiators, internal flooring and doors, viewing essential to fully appreciate.

Directions

M14 6BX



- Extended semi detached property
- Fully renovated
- New roof & gutters
- New flooring and internal doors
- New driveway extending to side
- Re turfed rear garden
- Close to well regarded schools
- No chain

Postcode - M14 6BX

EPC Rating - C

Floor Area - 1045.00 sq ft

Local Authority - Manchester City Council

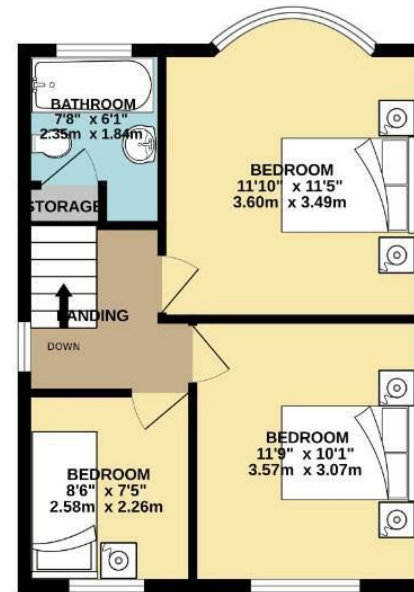
Council Tax - C



GROUND FLOOR
625 sq.ft. (58.1 sq.m.) approx.



1ST FLOOR
419 sq.ft. (39.0 sq.m.) approx.



TOTAL FLOOR AREA - 1045 sq.ft. (97.1 sq.m.) approx.
Measurements are approximate. Not to scale. Illustrative purposes only.
Made with Metropix ©2025



These particulars are believed to be accurate but they are not guaranteed and do not form a contract. Neither Jordan Fishwick nor the vendor or lessor accept any responsibility in respect of these particulars, which are not intended to be statements or representations of fact and any intending purchaser or lessee must satisfy himself by inspection or otherwise as to the correctness of each of the statements contained in these particulars. Any floorplans on this brochure are for illustrative purposes only and are not necessarily to scale.

Offices also at: Wilmslow, Macclesfield, Hale, Sale, Chorlton, Glossop, Manchester & Salford

757-759 Wilmslow Road, Didsbury Village, Manchester

0161 445 4480

didsbury@jordanfishwick.co.uk
www.jordanfishwick.co.uk